

# Technical Datasheet



## ProSec 201

Mortar for Protecting /  
Rehabilitating Sewerage  
Structures

### Technical Data (25°C)

#### Form

100% Grey Powder

#### Compressive Strength

@ 6 hours	≥ 18 N/mm <sup>2</sup>
@ 1 day	≥ 40 N/mm <sup>2</sup>
@ 7 days	≥ 50 N/mm <sup>2</sup>
@28 days	≥ 70 N/mm <sup>2</sup>

#### Flexural Strength

@ 1 day	≥ 6 N/mm <sup>2</sup>
@28 days	≥ 9 N/mm <sup>2</sup>

#### Chemical Composition

Al <sub>2</sub> O <sub>3</sub>	≥ 40%
CaO	≤ 38%
SiO <sub>2</sub>	≤ 6%
Fe <sub>2</sub> O <sub>3</sub>	≤ 16%

*\* Product test report is available  
upon request.*

Ver 1\_JK

### Description

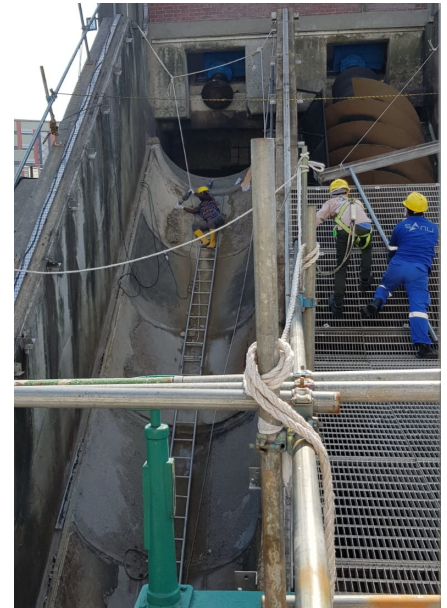
**ProSec 201** is a ready-to-use mortar for protecting wastewater infrastructure against severe biogenic corrosion related to hydrogen sulphide (H<sub>2</sub>S) found in wastewater environments.

### Uses

- **ProSec 201** is ideal as rapid repair to sewerage systems such as manholes, wetwells, etc.
- **ProSec 201** protects new structure against aggressive environment.

### Advantages

- Premixed to ensure good consistency.
- High early and ultimate strength.
- Good resistance to abrasion.
- Good chemical resistance.
- No Volatile Organic Compound (VOC).



### Application Instruction

#### Preparation

Clean the surface and remove any dust, unsound material, oil, paint, grease, corrosion deposits, etc.

#### Mixing Method

Mechanical mixing is necessary. Into a clean mixing container, pour 2.9 – 3.4 litres of water, add 25kg of **ProSec 201** slowly. Mix thoroughly until a smooth, lump free consistency is obtained.

#### Placement

**ProSec 201** can either be applied by wet spray or hand troweling. Minimum recommended thickness is 25mm.

#### Curing

Suitable curing methods such as wet mist spray, liquid curing membrane, etc. must be used to protect freshly applied **ProSec 201** from the

#### Cleaning

Remove uncured **ProSec 201** from tools and equipment with water.

Hardened material can only be removed mechanically.

#### Packaging

**ProSec 201** is available in 25kg bags or 1MT bulk bag.

#### Coverage

Approximately 2400kg/m<sup>3</sup> of **ProSec 201**.

#### Shelf life

Stored in unopened original packaging protected from direct sunlight and moisture, shelf life is six months.

### Handling Precautions

- Avoid contact with skin and eyes.
- Wear protective gloves and eye protection during work.
- If skin contact occurs, wash skin thoroughly.
- If in eyes, hold eyes open, flood with warm water and seek medical attention without delay.