

Technical Datasheet



ProSec 905EC

High Strength Polymer
Modified Grout Concentrate

Technical Data (25°C)

Form

100% Grey Powder

Compressive Strength

@ 1 day	≥ 20 N/mm ²
@ 7 days	≥ 40 N/mm ²
@ 28 days	≥ 70 N/mm ²

Flexural Strength

@ 28 days	≥ 5 N/mm ²
-----------	-----------------------

Setting Time (BS EN196-3: 1995)

Initial Set	≥ 60 mins
Final Set	≤ 600 mins

**Above tests conducted with
2 x 25kg Prosec 905EC
+ 1 x 50kg OPC (Grade 53)**

** Product test report is available
upon request.*

Description

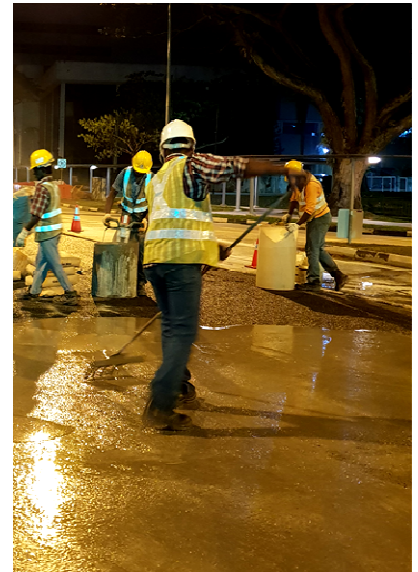
ProSec 905EC is a prepacked chemical concentrate developed to produce high strength cementitious topping grout for use in Semi-Rigid Pavement System (or Cement Grouted Bituminous Mix).

Uses

- **ProSec 905EC's** key application is to produce high strength cementitious topping grout for porous asphalt.

Advantages

- Low Cost.
- Minimum downtime.
- High early and ultimate strength.
- Good flowability.
- Chloride free.



Application Instruction

Mixing Method

Use of mechanical grout mixer is mandatory. Into the mixer, add required amount of water. We recommend 22 – 26 litres of water per 100kg mix. Add 2x25kg of **ProSec 905EC** and **50kg of OPC**. Mix thoroughly until a smooth, lump free and highly flowable consistency is obtained.

Placement

The mixed grout should be placed within 30 minutes after mixing. The grout is pumped onto the asphalt and worked into the surface manually or with a tractor fitted with rubber scraper.

Curing

Suitable curing methods such as wet mist spray, liquid curing membrane, etc. must be used to protect freshly applied grout from the drying effects of sun and wind. Curing must start immediately after placement.

Cleaning

Remove uncured grout from tools and equipment with water.

Hardened material can only be removed mechanically.

Packaging

ProSec 905EC is available in 25kg bags.

Coverage

Approximately 23.5kg/m² - 25kg/m² of mixed grout @ 50mm thick for asphalt at porosity of 25%.

Shelf life

Stored in unopened original packaging protected from direct sunlight and moisture, shelf life is nine months.

Handling Precautions

- Avoid contact with skin and eyes.
- Wear protective gloves and eye protection during work.
- If skin contact occurs, wash skin thoroughly.
- If in eyes, hold eyes open, flood with warm water and seek medical attention without delay.

Ver 2_JK_In